



Immediately report any discrepancies, and omissions on this document to architect

No.	Description	Date	Author
1	Issue for sale	12/03/2019	SA
2	Issue for sale	12/03/2019	SA
3	Issue for sale	12/03/2019	SA
4	Issue for sale	12/03/2019	SA

Scale Bar: 0 10 20 30 40

Key:

- Existing Trees
- Proposed Trees

Key: Total = 44 Dwellings

Two Storey Dwellings:

- 15 No. 4 Bed - 133m²
- 16 No. 3 Bed - 85m²

Single Storey Dwellings:

- 4 No. 3 Bed - 84m²

Two Storey Affordable Dwellings:

- 6 No. 2 Bed - 77.2m²
- 3 No. 3 Bed - 89.1m²

Detached Garages:

- Double Garage
- Single Garage

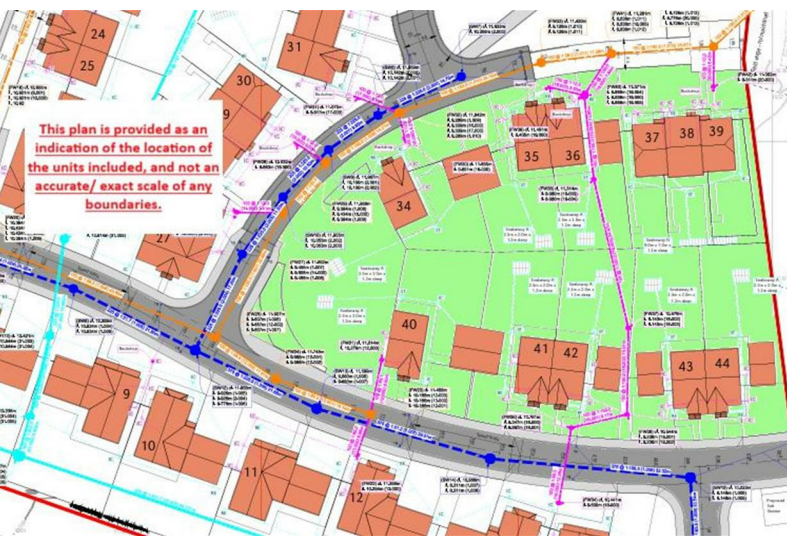
Gary John Architects
44 SILVER STREET, ELY, CAMBRIDGESHIRE CB9 9LQ
TEL: +44(0)1353 663274
E-MAIL: info@gjohnsarchitects.co.uk
WEB: www.gjohnsarchitects.co.uk

Case# 160616
Author: Clark
EAM Developments

Herbert Drive

Methwold, IP26

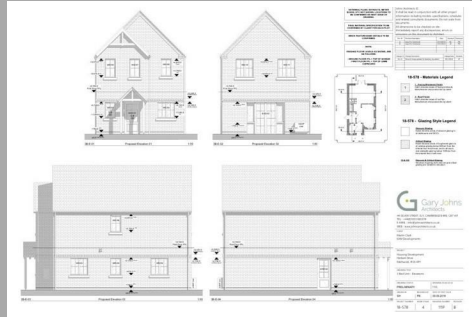
Guide price £275,000



Herbert Drive

Methwold, IP26

Guide price £275,000



Description

Seeking all bids in writing by 12 o'clock midday on Tuesday 30th June 2026.

DEVELOPMENT OPPORTUNITY! This part-completed residential development offers an exciting and unique opportunity to acquire 11 part-built units within the Norfolk Village of Methwold, consisting of 2 three bedroom detached units, 6 three bedroom semi-detached units, 1 three bedroom terraced unit and 2 two bedroom terraced units.

The village is located approx 7 miles from Brandon, 15 miles from Thetford and 12 miles from Downham Market which benefits from a train station providing rail links to Ely, Cambridge and London Kings Cross.

Plots 35 and 36 are three bedroom semi-detached units and furthest progressed, with screed laid and an underfloor heating system fitted.

Plots 34 and 40 are both three bedroom units, both part built up to 1st lift scaffold height.

Plot 41 - 44 are two pairs of three bedroom semi-detached units, also part built up to 1st lift scaffold height.

Plots 37 - 39, a terrace of three, are allocated to a Housing Association. 37 and 39 are two bedroom units, whilst plot 38 is a three bedroom unit. These are part built up to 1st lift scaffold.

The main drain crossing the site from plot 14 to the front of plot 36 is installed and live.

Electric and water mains are laid around the perimeter awaiting connection to each plot.

Relevant documents regarding Land South of Herbert Drive Methwold Thetford Norfolk IP26 4PY can be found on the

Kings Lynn & West Norfolk planning portal under application no. 15/02125/OM.

Agents Note

The Community Infrastructure Levy (CIL) is unpaid.

Interested parties will need to make their own enquiries with regards to the exact location and suitability of services and their connections.

Plans are provided as an indication of the location of the units included, and not accurate/ exact scale of boundaries.

Molyneux Estate Agents intend to make our particulars as accurate as possible, however measurements and statements are provided as a general guidance, they are not factual and should not be relied upon.

The Buyer is advised to obtain verification of the tenure from their Solicitor. The agent has not reviewed the title documents for this property.

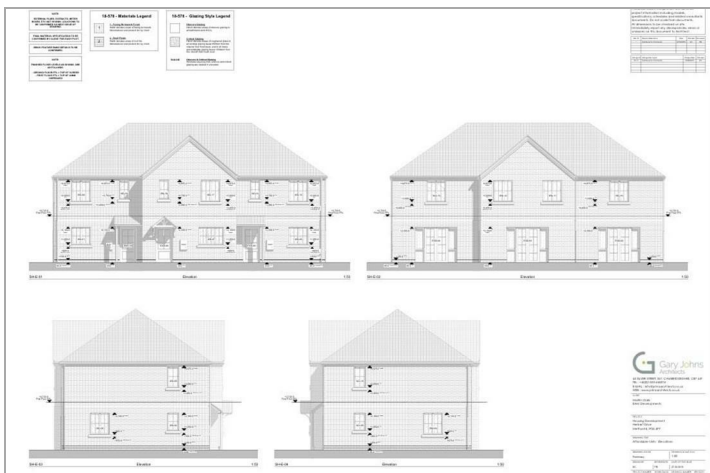
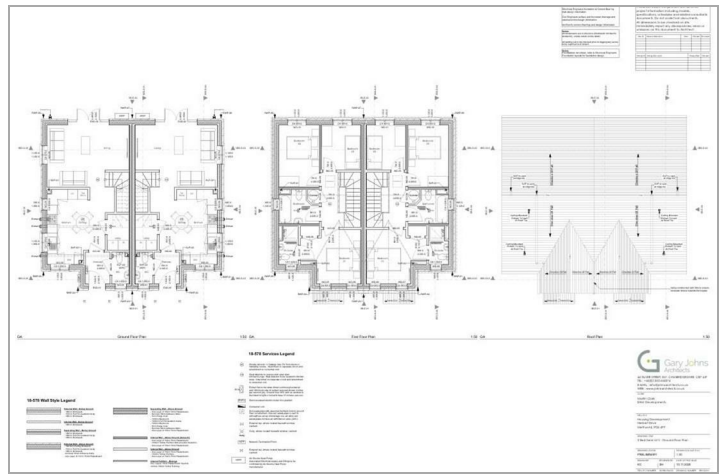
Anti-money laundering (AML) and Identification

We are supervised by HMRC and, as such, have an obligation under anti-money laundering regulations to conduct anti-money laundering checks on all potential buyers and sellers. We have partnered with Coadjute who will securely manage these checks on our behalf.

Once an offer is accepted (subject to contract) Coadjute will send a secure link for you to complete the biometric checks electronically. A non-refundable fee of £27+ VAT per person will apply for these checks, and Coadjute will handle the payment for this service.

These anti-money laundering checks must be completed before we can send a Memorandum of Sale to solicitors to confirm the sale. Please contact the office if you have any questions in relation to this.

Tel: 01842 818282





Viewing

Please contact our Brandon Office on 01842 818282 if you wish to arrange a viewing appointment for this property or require further information.

These particulars, whilst believed to be accurate are set out as a general outline only for guidance and do not constitute any part of an offer or contract. Intending purchasers should not rely on them as statements of representation of fact, but must satisfy themselves by inspection or otherwise as to their accuracy. No person in this firm's employment has the authority to make or give any representation or warranty in respect of the property.